

Step 5: Connecting Your Vehicle

Step 5.1 AutoTap will attempt to read your vehicle's VIN number

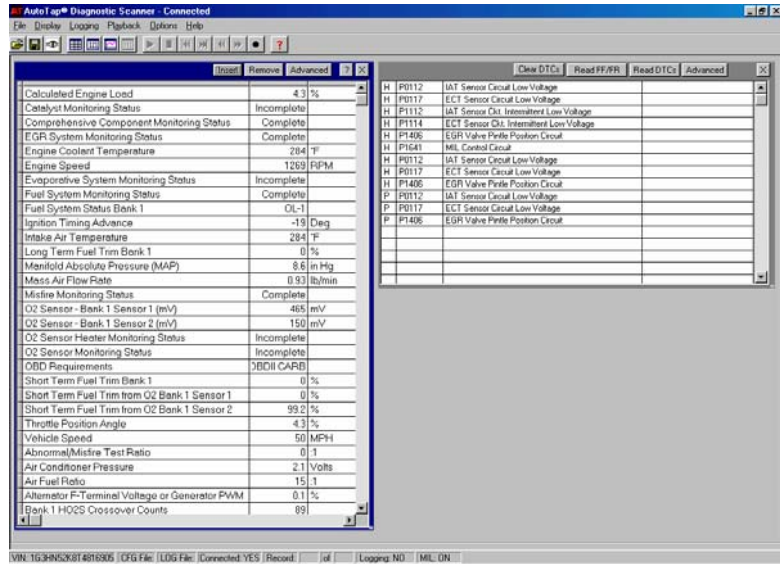
Step 5.2 If your VIN is not readable, you will be prompted to enter the VIN number manually

IMPORTANT: YOUR VIN NUMBER IS LOCATED ON THE DASH OF YOUR VEHICLE OR UNDER THE HOOD.

Step 5.3 You may also connect without using the VIN. If you select this mode, only generic parameters will be available.

Step 5.4 If you successfully connect, the bottom of your screen will display "**Connected: YES**"

Step 5.5 After your vehicle has been scanned, you will be able to view a table with generic OBDII parameters that are supported, a table with any diagnostic trouble codes, and an indicator that you are connected, i.e. "**Connected: YES**"
If you experience trouble, please contact us at support@autotap.com.



AutoTap®
OBDII Diagnostic Scanner

Quick Start Guide

Serial and USB Hardware

AutoTap® Installation and Registration

This document will help with the following:

- Identifying required components
- Installation of USB drivers
- Installation of AutoTap® software
- AutoTap® software registration
- Connecting to your Vehicle

WARNING!

Do not attempt to drive the car and observe the AutoTap scanner screen at the same time. Have a passenger watch the readouts, or use the logging function to record the readings for later review.

Do not operate a vehicle in a closed area while testing with your AutoTap scanner. Running vehicles produce carbon monoxide, a colorless odorless gas that can kill you.

Visit www.autotap.com for FAQs, "How To" articles, free repair information, software updates and information on purchasing software and hardware upgrades.

This **AutoTap** scanner is made in the USA by

e&e electronics
MANUFACTURING COMPANY

707 Dayton Rd., P.O. Box 1040, Ottawa, IL 61350

www.autotap.com

Documentation Number: ATCD1905

Step 1: Make Sure you Have the Required Components



AutoTap® Software
CDROM provided with kit
Download latest software at:
<http://www.autotap.com/downloads.html>

AutoTap® Interface Assembly
ATU for USB Connectors
ATS for Serial Connectors



System Requirements for PCs/Laptops (not included)



Recommend Pentium 233Mhz or better
(or equivalent AMD processor)
Windows 98, ME, 2000 or XP
50 MB of free hard drive space
32 MB RAM
USB port

System Requirements for Palm PDAs (not included)

Works with Palm™ PDAs with O/S 3.5 and higher,
8 MB or higher
Verify compatibility with your PDA at
www.autotap.com



Palm Interface Cable
Interface cables sold separately based on
your PDA

ICON: Registration Code - document icon is OK
Registration Certificate
XYZ digit registration code

Step 2: Installation of USB Drivers

IMPORTANT: DO NOT CONNECT YOUR USB HARDWARE UNTIL INSTRUCTED TO DO SO.

- Step 2.1 USB Driver Installation
 - Step 2.1.1 Insert the CD into your PC. The CD will load automatically. If not,
 - Step 2.1.2 Click on the “Start” Button
 - Step 2.1.3 Select “Run”
 - Step 2.1.4 Type “D:Setup”
 - Step 2.1.5 Select “Install USB AutoTap drivers”
 - Step 2.1.6 Connect the USB cable to your PC when prompted.
 - Step 2.1.7 Follow the on-screen instructions to install the drivers.
 - Step 2.1.8 When installation is complete, proceed to Step 3.

Step 3: Installation of AutoTap® Software

- Step 3.1 AutoTap® software for Windows can be installed without connecting AutoTap® hardware to the PC/laptop
 - Step 3.1.1 Insert the CD into your PC. The CD will load automatically. If not,
 - Step 3.1.2 Click on the “Start” Button
 - Step 3.1.3 Select “Run”
 - Step 3.1.4 Type “D:Setup”
 - Step 3.1.5 Select “Install Software” from the main menu
 - Step 3.1.6 Select the applicable software
 - Step 3.1.7 Follow the on screen instructions
 - Step 3.2 AutoTap® software for the Palm PDA can be installed without connecting AutoTap® hardware to the PC/laptop or PDA
 - Step 3.2.1 Insert the CD into your PC. The CD will load automatically. If not,
 - Step 3.2.2 Click on the “Start” Button
 - Step 3.1.3 Select “Run”
 - Step 3.1.4 Type “D:Setup”
 - Step 3.1.5 Select “Install Software” from the main menu
 - Step 3.1.6 Choose “AutoTap for Palm”
 - Step 3.1.7 Follow the on-screen instructions until you are prompted for a destination folder to store your files.
 - Step 3.1.8 Upon your next HotSync®, the software will be installed

on your Palm PDA.

Step 4: AutoTap® Software Registration

IMPORTANT: THE AUTOTAP HARDWARE MUST BE CONNECTED TO YOUR VEHICLE AND TO YOUR COMPUTER/PDA.

Please note that the cable between the PDA and the Interface Assembly is the Palm Interface Cable and, if for a PC/Laptop, the cable is part of the Interface Assembly and can be either USB or Serial. Also note the OBDII connection.

- Step 4.1 Windows Registration
 - Step 4.1.1 Connect the OBDII cable/port to your vehicle’s OBDII port, which is usually located under the dash near the steering wheel
 - Step 4.1.2 Connect the other USB or Serial cable to your PC/Laptop
 - Step 4.1.3 Turn your vehicle’s ignition to the “Run” position
 - Step 4.1.4 Double click on the AutoTap® icon that appears on your desktop
 - Step 4.1.5 On the first startup you will be prompted to enter the 12 digit, alphanumeric registration code from the registration certificate
- Step 4.2 Palm PDA Registration
 - Step 4.2.1 Connect the OBDII cable/port to your vehicle’s OBDII port, which is usually located under the dash near the steering wheel
 - Step 4.2.2 Connect the special Palm HotSync cable to the serial port on the “computer side” of the AutoTap Interface Assembly
 - Step 4.2.3 Turn your vehicle’s ignition to the “Run” position
 - Step 4.2.4 Double click on the AutoTap® icon
 - Step 4.2.5 On the first startup you will be prompted to enter the 12 digit, alphanumeric registration code from the registration certificate